

# A Regional Approach to Frailty Community of Practice Meeting 6

14<sup>th</sup> March 2019  
*Lesley Bainbridge*  
*Clinical Lead*



# Welcome and Introductions

involve consider assess respond evaluate

# Frailty ICARE: *what's the latest?*

1. **Evaluation:** ARC bid – still awaiting outcome, bridging the front line and academia - AHSN funding for a Research Associate not confirmed yet
2. **Workforce:** job descriptions for 3 cross organisational competency assessors at panel for 3rd time, funding application submitted for consideration at ICS Workforce Development work stream 27<sup>th</sup> March
3. **Digital:** job description for strategic clinical digital lead and support at panel for 3<sup>rd</sup> time, process to access secured funding still being finalised

# Frailty ICARE: *what's the latest?*

- 4. Falls:** North East Regional Falls Task Group; establishing the link between local and regional falls work and Frailty ICARE outcomes – JS meeting with regional lead Consultant Geriatrician Fiona Shaw
- 5. Our first publication:** British Medical Bulletin – submitted by housing and workforce CoPpers sharing previous work undertaken regarding optimising hydration status for care home residents living with dementia

# Frailty ICARE: *what's the latest?*

6. **Care Homes:** student nurse internship

<https://www.enhancedcare.org/student-nurse-placement>; student nominated mentor for an award [www.cavellstarawards.org](http://www.cavellstarawards.org) - need ideas for a surprise presentation?

7. **Sir James Knott Trust:** charitable donation of £30,000 to support our work

8. **Supporting Tools:** BGS Comprehensive Geriatric Assessment Toolkit for Primary Care Practitioners <https://www.bgs.org.uk/resources/resource-series/comprehensive-geriatric-assessment-toolkit-for-primary-care-practitioners>

# Frailty ICARE: *what's the latest?*

9. **NHSE ICOPE Programme:** recognising that frailty is cross cutting but fits into many agendas [education, metrics, care pathways] taking a 3 strand approach
- i. urgent community response [expanding IC]
  - ii. proactive community response [case management]
  - iii. enhanced health in care homes [expand cross country]

*invited to join the data and analytics steering group – more to follow*



# Showcasing CoPper: Housing

Lindsay Courtney, Clinical Lead, HomeGroup

Glenda Cook, Professor of Nursing, Northumbria University

A man and a woman are sitting on a couch in a living room, looking at a tablet together. The woman has bright pink hair and is wearing a white shirt with a yellow floral pattern. The man has a beard and is wearing a blue t-shirt. They are both smiling. In the background, there is a staircase and a lamp.

home  
group

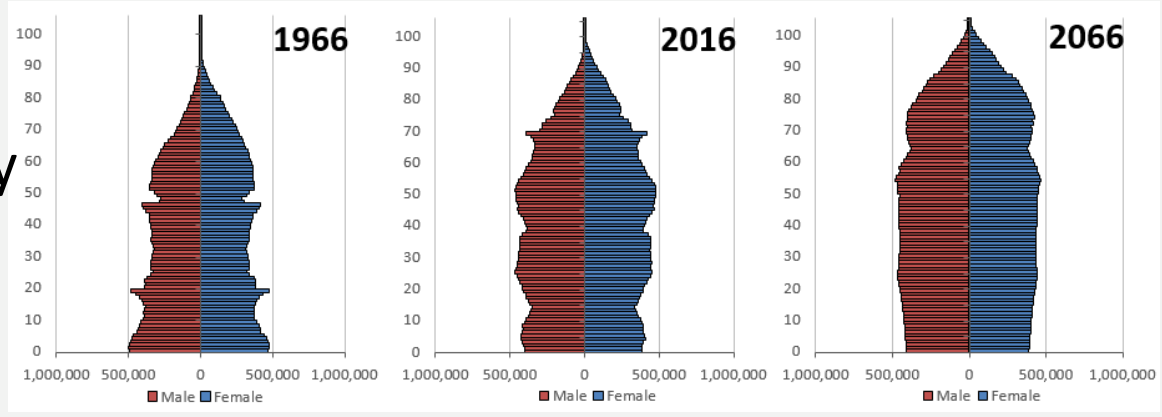
**Housing for the  
Future: Planning  
Now**



# Issues and challenges



Ageing society



Availability  
Options  
Expectations



# Design for Care



- Smart Living – Voice Activation , Digital peramiters , enabled enviroments ,Biometrics
- Place Making
- Community Connectivity
- Shared Enviroments
- Home for Life ,-Flexibility ,Adaptability
- Out Door Space –Bio Diversity



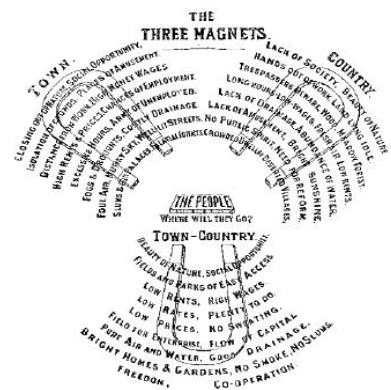


# South Seaham Garden Village

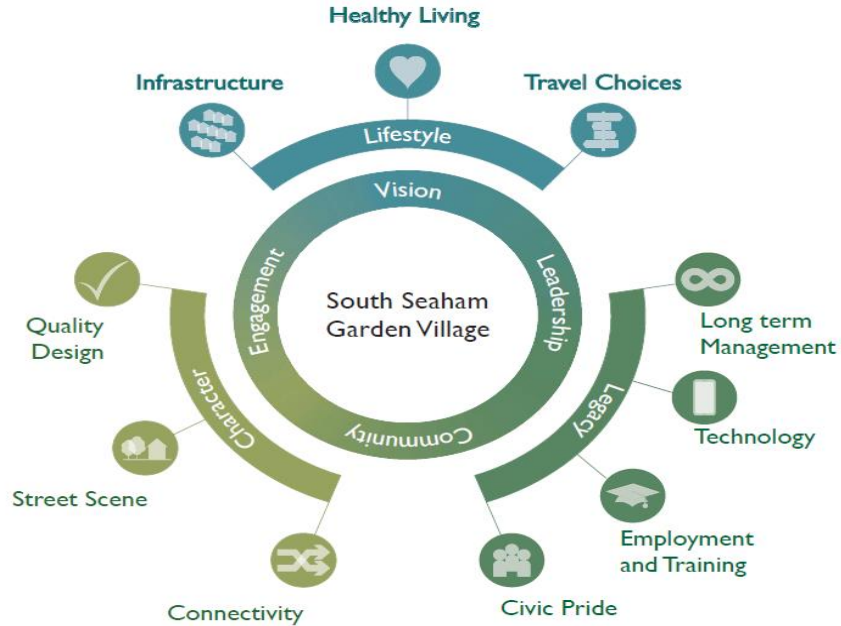


# Vision

- In line with Government Policy.
- Inclusive and welcoming to all parts of the community.
- Affordable housing in a beautiful, healthy and sociable community setting.
- Drawn on the traditional roots of the Garden Village movement.



# Modern interpretation of the Garden Village principles.





Indicative image of break out space and reception



Indicative image of inter-gated health and well being multi-functional space



Indicative health and well being resource centre

- Multi use space
- Pharmacy
- Outdoor garden
- Health suite
- Community cafe
- Reception

## South Seaham Garden Village - Integrated Health and well-being Hub



Indicative image of communal garden space



**The Digital future starts with a human connection**



**Gateshead Innovation Village.....**



# Gateshead Innovation Village

## Smart Home

















# What is the proposal ?

**Research- 12 months**  
**(March 2019- March 2020)**

## **Project aim**

To explore the potential for providing digital technology support within modular housing to promote residents' independence through monitoring connectivity and activity for 3 client groups – older people, people with learning disability and those with mental health problems.



## **Method**



- 3 monthly cycles of user led technology deployment alongside activity monitoring.
- Each cycle will be user & customer led by a community of practice to define requirements and test assumptions.
- Each 3 month cycle will commence with an onsite meeting with stakeholders from the community of practice to discuss their experiences and talk about data generation, data capture, data collection, desired outcomes and attitudes to technology interventions.



# Intelligent sensors and homes

Function	
	<b>Manual or automatic emergency / Fall Alarm</b> <ul style="list-style-type: none"><li>• Press the portable emergency button</li><li>• Alarm at fall (based on inactivity)</li><li>• Fall after visiting the bathroom (lower latency)</li></ul>
	<b>Door Sensor</b> <ul style="list-style-type: none"><li>• Alarm when the door out of the home opens</li><li>• Alarm if you leave the building</li><li>• NB. Can be integrated with electronic lock</li></ul>
	<b>Bed Sensor</b> <ul style="list-style-type: none"><li>• Alarm if the user leaves the bed</li><li>• Alarm if the citizen does not come back to bed</li><li>• Alarm if no movement in bed</li></ul>
	<b>Light</b> <ul style="list-style-type: none"><li>• Lights when the bed vacated in order to avoid falls</li></ul>
	<b>Kitchen Sensor</b> <ul style="list-style-type: none"><li>• Alarm overheat pans / pots / plates</li><li>• Turning off the stove by misuse or forgotten plates</li><li>• Extra security when a person stands at the stove</li></ul>
	<b>Ground Sensor</b> <ul style="list-style-type: none"><li>• Alarm by strong temperature drop (Open window or door)</li></ul>
	<b>BATHROOM Sensor</b> <ul style="list-style-type: none"><li>• Faster fall alarm</li><li>• Alarm on for long stay</li></ul>





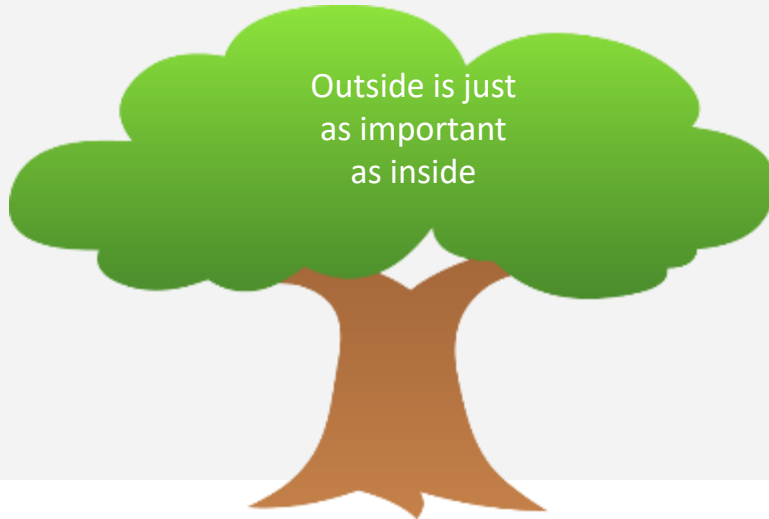
# Customer focus- leading the way !



- Contributing to a national body of knowledge utilising a customer focused and inclusive approach to research.
- Supports independence and ageing in a way customers want it and ensures our design assumptions and future offers are market leading.



Garden space will be designed to provide maximum opportunities for customers



Outside is just as important as inside

Research will also look at digital solutions that support independence and engagement of outdoor space

# Invitation to you

Join us to plan the future!

Home Group is collaborating with Northumbria University to address the following question:

How can independence be supported through technology-enabled modular homes?



We invite you to join our community of practice

This involves participation in 3 workshops to plan testing scenarios, propose technological solutions, and assess results.





# System Update: What's going on where?

All

# CCH

- Locality CoPpers:  
steering groups  
mapping  
action plans
- Supporting CoPpers:  
sub-groups to be established; digital, workforce, medicines,  
care homes



# Continuing our Digital Journey

## Exploring Apps at the Front Line

Rob Brown

A large, stylized graphic in the background composed of overlapping, semi-transparent human figures in various colors (purple, orange, green, blue, red, grey). Each figure is represented by a circular head and a curved, open-bottom body, suggesting a group of people or a community.

# Any Other Business